



8

1

					"	"	2019
2973							
"	"	"	"	"		81,893.12	
		"	"	"	"	"	"
2020	4	10			2020	4	16
2020	4	21					
					"	"	"

91420000670357025U

300527

www.china-huazhou.com

,

1

2012 3 23

[2012]142

2012 3 30

2011 8 31

53,324.39 1:0.6507 34,700

[2012] 1-0028

34,700 2012 3

31

420000000010708

"

"

2013 6 3 2013

2011 8 31

52,719.92

53,324.39

604.47

1:0.6507

1:0.6582

2013 5 15

[2013] 710940

1	SS	65.599%
2	SS	19.587%
3	SS	2.935%
4	SS	2.935%
5	SS	2.935%
6		6.099%
		<b>100.00%</b>

[2015]245

A

115,700,000

6.64 / 2016 8 5

462,700,000

2

2020 2 20

			%
1		435,328,835	47.64
2		129,983,472	14.22
3	0	19,477,282	2.13
4		19,477,282	2.13
5		13,777,864	1.51
6		11,257,700	1.23
7		11,077,928	1.21

				%
8	—		6,781,733	0.74
9			5,766,232	0.63
10	—		4,881,324	0.53
		-	<b>657,809,652</b>	<b>71.44</b>

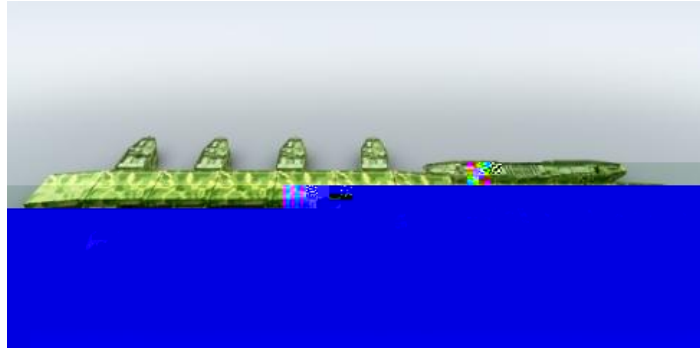
**1**

25

40-80

1

" "



19



4

3

5



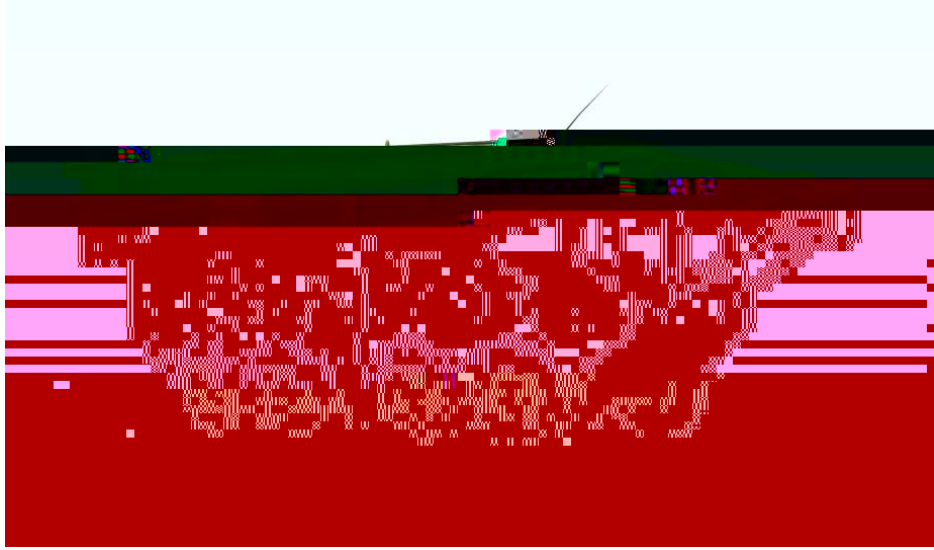
5

4

18.2

3.3

8



6

3

1

2

3

4

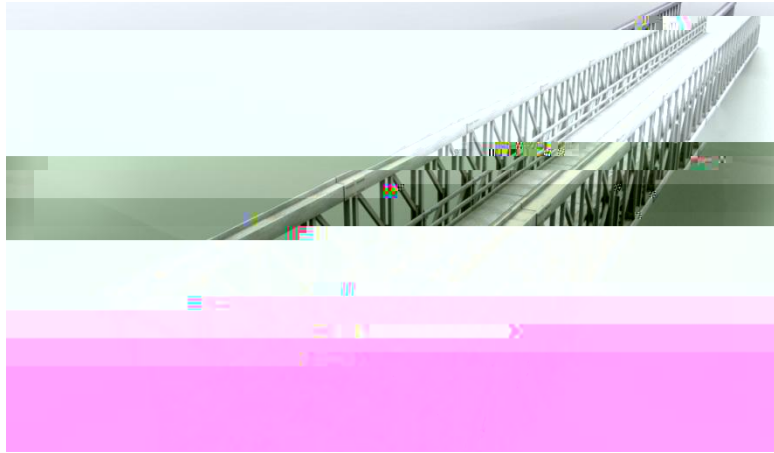
5

321

CB100

CB200

ZB200



7

4


2

	■ ■ 10
	■
	■

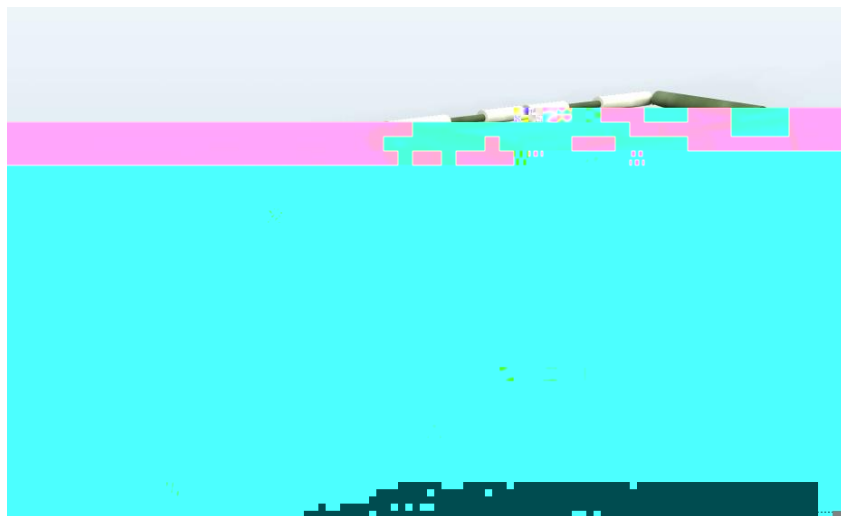
3

100

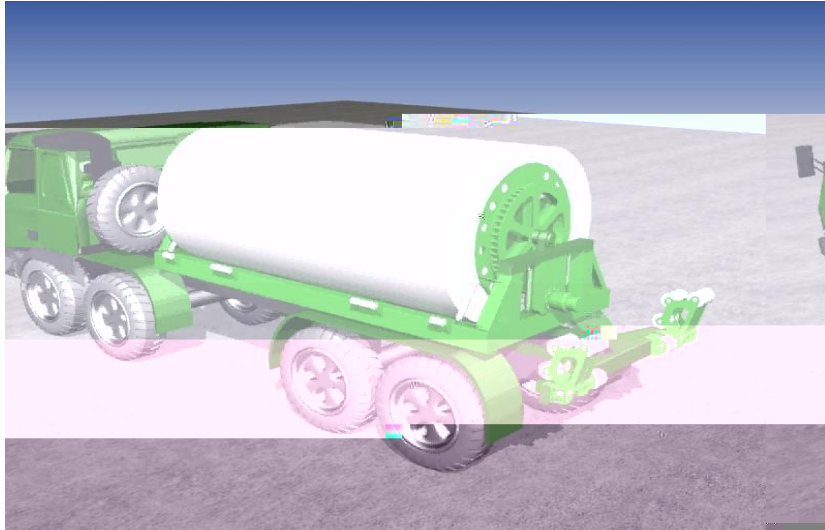
4.2

100

4.2



8



9

4

60 300

5

**6**

/

**7**

**8**

1

	<b>2019</b>	<b>2018</b>	<b>2017</b>
	<b>12 31</b>	<b>12 31</b>	<b>12 31</b>
	394,273.24	419,351.97	361,649.46

2019		7.64%	0.17	0.17
		7.20%	0.16	0.16
2018		10.53%	0.33	0.33

	2019.12.31/ 2019	2018.12.31/ 2018	2017.12.31/ 2017
	4.41	3.85	3.06
	0.61	0.68	0.71
	28,228.64	33,095.39	29,245.66
	11.59	60.08	209.45
	0.06	-0.08	-0.15
	0.92	-0.57	0.09
	4.17%	3.24%	2.96%

$=$  /  
 $=$  - - - - /  
 $=$  /  
 $=$  /  
 $=$  /  
 $=$  /  
 $=$   
 $=$  + + /  
 $=$

	86.15%		62,288
		0.76%	

2019 4 24

2019 6 14          2019

2020 1 9

2019 2973

81,893.12

2020 4 30

2020 361

1

2

1

2

3

4 2020 4 29 2019

15,970.83

15,049.35 2018 2019

1

2

3

1

1

2017	2018	2019	
106,411.02	54,117.93		44,569.45
			12.32% 25.38%
13.73%			

2

2017	2018	2019	
45,301.36	55,554.35		62,356.18
			17.24% 10.80%
14.09%			

3

2017	2018	2019	
4,483.41	-50,276.50	84,436.02	2018
		54,759.91	1,321.39%
	2018		2018

4			
2019	51,702.05	10.29%	
10,268.91	19.36%		15,970.83
	28.56%	2019	

15%

" "

" "

" "

" "

" "

" "

2020

" "

2020  
2020 3

2020

50%

1

7%

2

7%

3

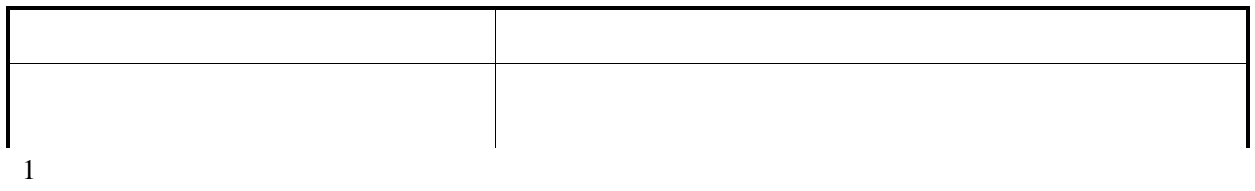
22

4

5

8

9




48

21

100026

010-60838380 13810115579

010-60836029

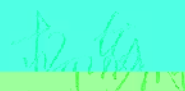


(本页无正文,为《吉首智证券股份有限公司关于中国银河证券股份有限公司定向发行优先股  
认购协议》之补充协议) (以下无正文)

保荐代表人:



张明悦



杨萌

法定代表人(或授权代表):



张佑君

